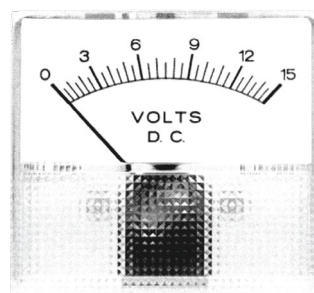


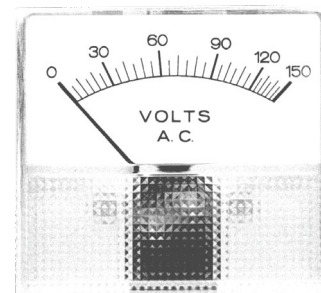


# 5% Moving Magnet Meters

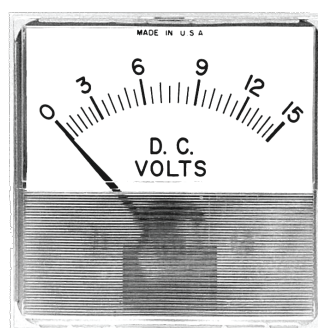
## Analog Panel Meters



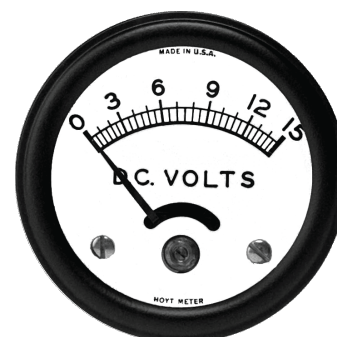
**825-DC  
Moving Magnet**



**826-AC  
Rectifier**



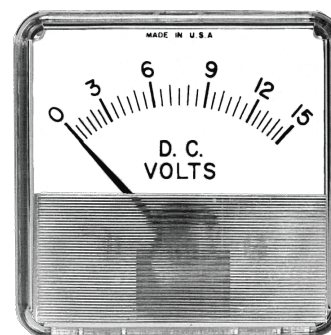
**799**



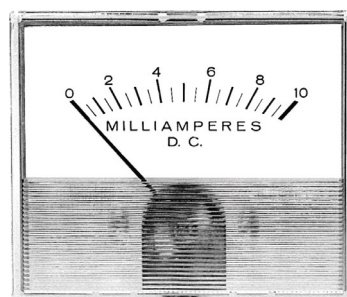
**640 Flush Mount**



**693**



**793M**



**795**



**Bezel Mount**

### FEATURES

- These meters are especially suited for applications requiring high durability at low cost.
- They feature rugged steel backs, U-clamp for mounting, fade proof lithographed metal dials, and static-free polystyrene or glass fronts.
- This series comes in a wide variety of case styles and colors and in special ranges to meet customer specifications.
- Current ranges up to 50 amps self-contained are available for intermittent use.
- Voltage ranges start as low as 50 millivolts.
- Ranges up to 300 volts DC are available.

### HOW TO ORDER

To order Hoyt moving magnet meters, select the model, input range and scale.

ORDERING EXAMPLES:

1. Model 799, range 0-15VDC, scale 0-15VDC

**Example: P/N 799-15VDC**

2. Model CK-910, range 0-50MVDC, scale 0-100ADC

**Example: P/N CK-910-50MVDC-100ADC**

**Hoyt Electrical Instrument Works Inc.**

23 Meter Street  
Penacook, NH 03303

**Phone:** (800) 258-3652

**Fax:** (603) 753-9592

**Email:** sales@hoytmeter.com

**www.hoytmeter.com**

H104610

Page 1 of 2

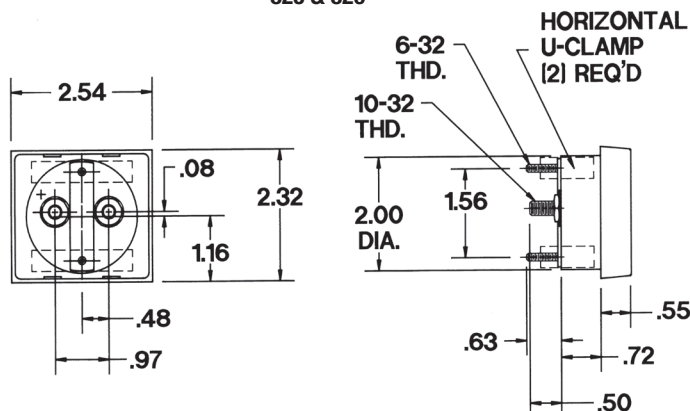


# 5% Moving Magnet Meters

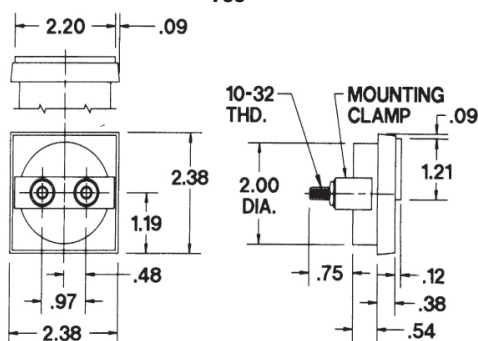
Analog Panel Meters

## DIMENSIONS

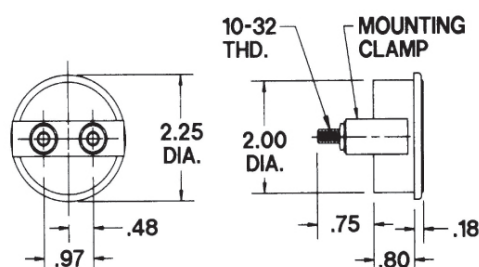
825 & 826



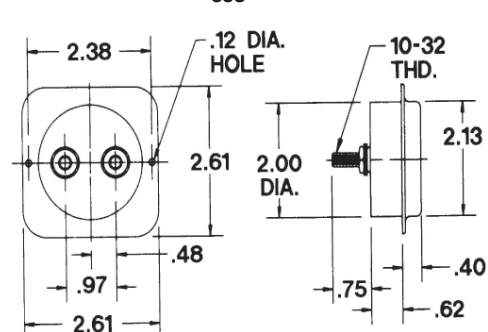
799



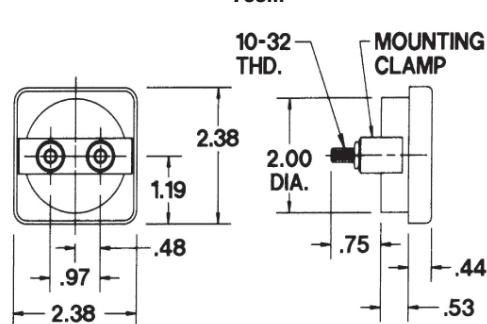
640 Flush Mount



693



793M



795 & 795B

